



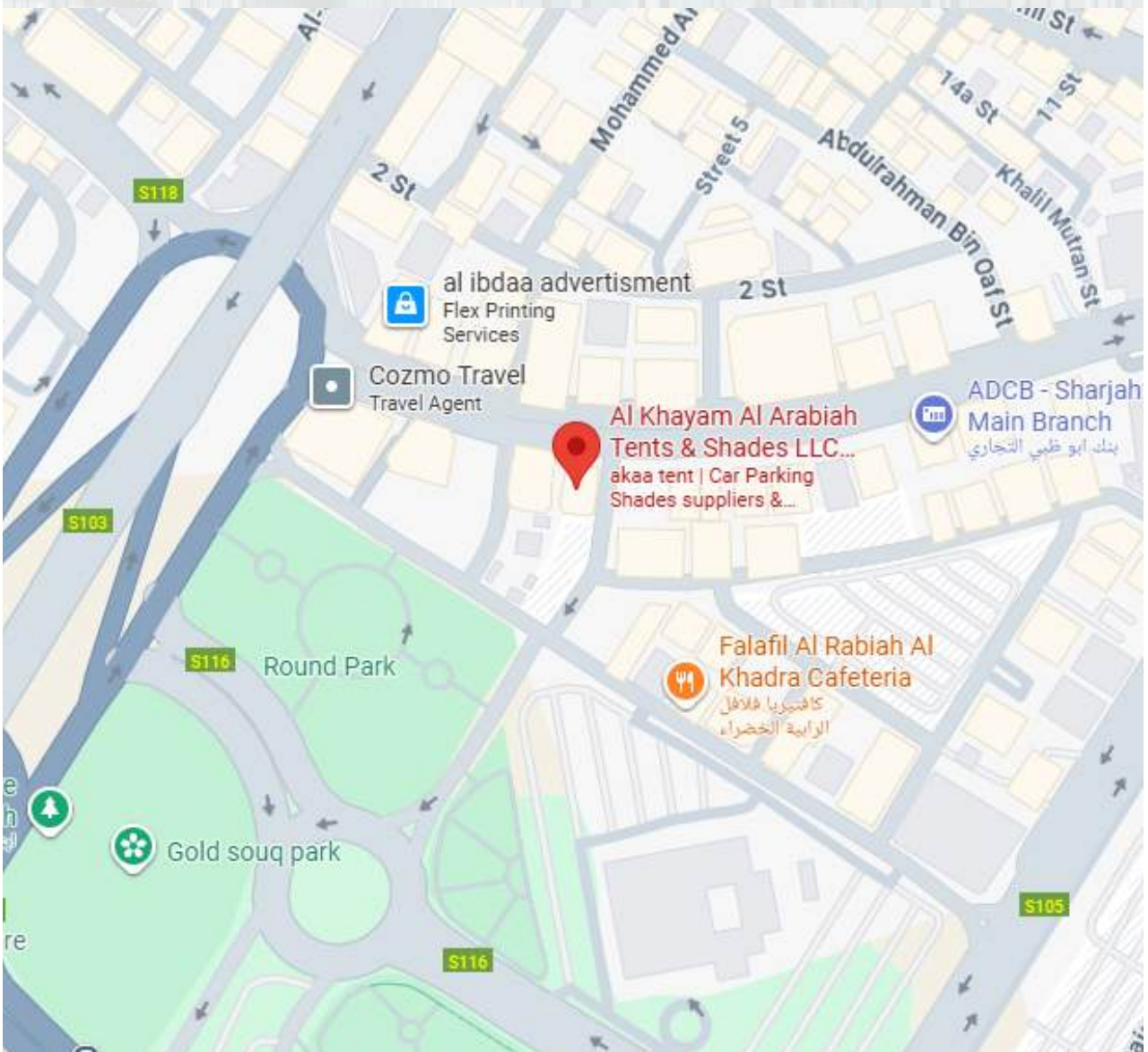
**AL KHAYAM AL ARABIAH
TENTS & SHEDS IND. LLC**

COMPANY PROFILE



OFFICE LOCATION

Al Soor, Liberty Building 2nd flr.
Office 201& 203, Sharjah,
PO Box: 40061





COPYRIGHT 2025

These pages contain information about material that is protected by copyright laws.

No part of this brochure may be copied, duplicated or communicated in any form or by means, electronic or mechanical, including photocopying, facsimile, or by any such like systems without permission of the publishers.

All rights reserved.

We reserve the right to make alterations without notifications.

We reserve the right to make alterations without notifications.

**AL KHAYAM AL ARABIA TENTS
AND SHED IND L.L.C SP**

Company Profile

AL KHAYAM AL ARABIAH

TENTS AND SHEDS IND L.L.C SP



ABOUT US

We are Sharjah based company dealing in manufacturing and supply of tents for sales and rentals. One of our major works is the manufacturing, fabrication and installation of all kinds of tents, Car parking sheds, canopies for doors and windows. Al Khayam Al Arabia Tents and Parking Shades Trading LLC Sharjah applies the latest technology and the best practices in developing environment-friendly products. We manufacture products with the essential support of the design and engineering department, which creates and develops exclusive modern designs for. Al Khayam Al Arabia Tents and Parking Shades Trading LLC Sharjah factory is fully well-equipped with German-made machineries and with the world's state-of-the-art technologies, giving us an edge to always manufacture and produce high-quality products for our valuable customers. Al Khayam Al Arabia Tents and Parking Shades Trading LLC Sharjah is the only manufacturing company in UAE Sharjah which provide after sale services and customer care center. We are specialized in Tents structure manufacturing, sale & Rental solution.

HISTORY

Al Khayam Al Arabia Tents and Parking Shades Trading LLC Sharjah was established in 1982 and Located in Sharjah industrial zone U.A.E it is the sister company of AL Khayam Tents Industry LLC and also a sister company of Empire Marquee Pvt Ltd located in Pakistan.

Our Vision & Mission



VISION

Our vision is to satisfy customers by building transparent business, trust, loyalty and using the best strategy as i.e. A Satisfaction of our customer is the best business strategy of all and Our success stories demonstrate the trust of clients have in our capabilities to reinvent business & Enhance costs a trust that is vindicate by result.

MISSION

Excellence in fulfilling the commitments made to clients Uncompromising commitment to the quality of work. Developing visibility to generate new business leads. Timeous response to client's orders. Successful Marketing.

OUR VALUES

At AKAA Tents, our customers come first. We work with honesty, care, and a passion to deliver solutions that truly satisfy their needs.

We believe in transparency and trust building strong relationships through clear communication and reliable service.

Excellence drives us. From design to installation, we stay committed to delivering quality tents that stand out in performance and style.

Quality is at the core of everything we do. We never compromise on materials, craftsmanship, or customer experience.

We keep growing and innovating to bring smarter, stronger, and more sustainable tent solutions for every client and every occasion.

Why AKAA?



WHY AKAA TENT!

A renowned leading U.A.E- based manufacturer of marquee tents systems and industrial steel buildings. A wide range of over 200 different temporary structure systems for multiple applications. State-of-the-art production facilities are able to produce up to 10000 m2 of the new structure per week. Components are finished by state-of-the-art machine and by hand ensuring a consistent high quality finish.

Dedicated, assisted by skilled professionals, the technical team of cad designs, and engineers for custom projects.

European Standards guarantee high-quality professional engineers and fully certified structures
Competitive pricing policy across all product lines- ensuring customer satisfaction.



TENTS AND SHADES

AKAA Tents and Shades L.L.C utilize the finest tools and techniques for tent and Shades manufacturing.



FORWARD THINKING

AKAA is a great, forward-thinking Tents & Shades manufacturing company in UAE and its nice to serve its services to its clients.



PROBLEM SOLVERS

AKAA Tents and Shades LLC is available here for you any time and provide best tents and shades services.



CUSTOMER SUPPORT

We take care of our beloved Customer's needs by delivering professional and high quality services.

AKAA PRODUCTS



ALUMINIUM & STEEL PERGOLA



TENSILE SHADE STRUCTURES



ALUMINIUM & STEEL TENTS



CAR PARKING SHADES



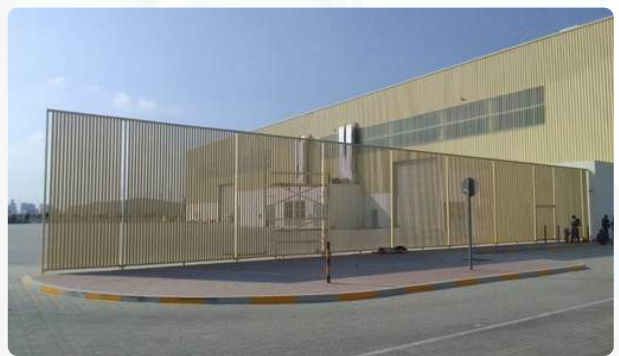
MILITARY & RELIEF TENTS



WAREHOUSE MANUFACTURING



STEEL & ALUMINIUM WORKS



FENCING & GATES

SAIL SHADES



Details:

Sail Shades are mainly used for the outdoors, whenever you want to plan a trip and want to go outside shade sail help you to prevent from sun as well it helps you in rain which is plus. These shades are quick to install which is really quite obvious and is even the reason why you can easily collapse them and use it for another reason.



SWIMMING POOL SHADES



Details:

The swimming pool is an excellent place to cool down your head on a scorching summer day. However, the cooling-off process will be impossible if the sun glares down with all its might. Therefore it is better to minimize the impact of sun rays in the pool area rather than getting burned by the sun while relaxing in the swimming pools. The swimming pool shades from Al Khayam Al Arabiah Tents & Sheds is all set to do the job of protecting you from harmful UV rays.



PERGOLAS



Details:

AKAA TENT offers pergolas crafted from wood, steel, and aluminum, each designed to elevate any outdoor space. Wood brings natural warmth, steel provides strong modern structure, and aluminium delivers sleek, low-maintenance durability. Together, these options offer versatile, stylish solutions for every landscape and lifestyle.



WAREHOUSE MANUFACTURING



Tent Details:

industrial use, and logistics operations. Constructed with high-quality steel or aluminum frames and sandwich panel cladding, it offers superior thermal insulation, fire resistance, and weather protection compared to traditional fabric warehouses.

Engineered for stability and longevity, the structure ensures excellent load-bearing capacity and can withstand harsh environmental conditions, including high wind speeds and extreme temperatures.

Material and Fabrication:

- Main Frame: Heavy-Duty Aluminum or Galvanized Steel
- Wall & Roof Cladding: PU / PIR / EPS / Rockwool Sandwich Panels
- Panel Thickness: 40mm – 100mm (customizable)
- Thermal Conductivity: Low heat transfer for efficient insulation
- Fire Rating: Fire Retardant (B1 / B2 Standard)
- Flooring: Optional Concrete Slab or Elevated Flooring System
- Doors & Windows: Industrial Roller Doors / Sliding Doors / Ventilation Panels

Material and Fabrication:

- High Insulation and Energy Efficiency
- Fireproof, Waterproof, and Weather-Resistant
- Modular Design for Quick Assembly
- Long Lifespan with Minimal Maintenance
- Strong Structural Stability for Industrial Loads
- Customizable Design & Size Options

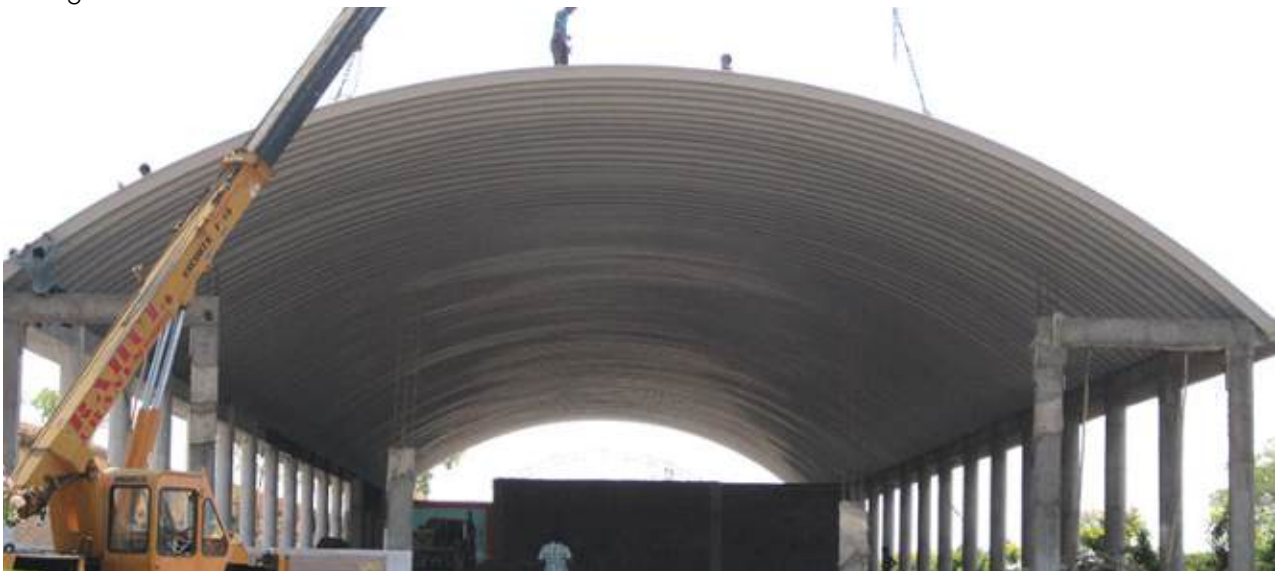


K-SPAN STRUCTURE



Details:

K Span Car Parking Shades are engineered with precision using advanced technology and modern design principles to ensure exceptional strength and durability. Crafted from premium materials like PVC, PTFE, and HDPE fabrics, these shades offer outstanding performance features – including flame and tear resistance, superior UV protection, thermal comfort, and excellent resistance to harsh weather conditions such as strong winds and snow.



CAR PARKING SHADES



Details:

The Car Parking system is an innovative and stylish car shelter solution designed to provide maximum protection against harsh weather conditions such as intense sun, heavy rain, and dust. Its design resembles an oversized umbrella, combining aesthetic appeal with functional efficiency to safeguard your vehicle year-round.



PAGODA TENT



Tent Details :

Pagoda Tent Very suitable for small gatherings, birthday parties and various parties. We tarp is waterproof fire of PVC material, rainy weather can be used even in the water will not flow into the inner tent. Independent house structure, shape looks nice, like a little house to move, galvanized iron pipe brackets to support, stable and durable. And unlimited space and can be installed in small private courtyard garden. Grass, cement and so can. Wind Load Capability is 80 Km/h (0.3kn/m²)

Material and Fabrication :

Aluminum Alloy Main Profile, Floor System, Glass Door, Glass wall, PVC Roof Cover, Ground Anchors, Sidewalls with PVC Fabric, Lining Curtains, Double Wing Glass Door, Rain Gutters, Decoration ceilings and Inside curtain.

Specifications of Roof & Side wall:

PVC: 0.46mm thickness PVC, 580 - 900 GSM, Fire retardant to DIN 4102 B1, M2, Water proof, UV protection



Tent Sizing

3M X 3M, 4M X 4M, 5M X 5M, 6M X 6M, 8M X 8M, 10M X 10M, Modify as per Request

Span Width	Eave Height	Ridge Height	Main Profile
3m / 4m / 5m / 6m / 8m / 10m /	2.5m / (For 3-6m) 2.6m (For 8m, 10m)	4.3m / 4.8m / 5.43m / 5.92m / 5.36m / 6.38m /	65x65x2.5mm (for 3-6) 122 x 68 x 3mm (for 8m, 10m)



A SHAPE TENT



Tent Details:

The A-shape tents are the ideal solution in different occasions like backyard gathering, Christmas celebration, wedding ceremony, birthday party, annual banquet and music festival. We have designed many custom tents for special festivals like beer festival, lights festival, music carnival and many more. The party marquees are available in different sizes and shapes. Its inside provide 100% interior space so that you can design and decorate it according to your need of occasion. The span can be optional from 3 – 60m in clear span design. And the length can be increased or decreased flexibly by 5m / 3m bay distance in each unit.

Material and Fabrication :

- Aluminum Alloy Main Profile,
- PVC Roof Cover & PVC Clear Roof Cover
- Ground Anchors
- PVC Sidewalls & PVC Window sidewall
- Lining & Curtains
- Double Wing Glass Door / Sliding Door
- Rain Gutters
- Decoration ceilings and Inside curtain
- Glass Walls
- Weight Plates
- Floor System & Ramp for Glass Doors
- Flat ABS Walls & Shaped ABS Walls
- Fire Door
- Clear PVC Gable Wall
- Horizontal Glass Wall
- PVC: 0.46mm thickness PVC, 580 – 900 GSM Fire
- retardant to DIN 4102 B1, M2, Water proof, UV



ARCUM TENT

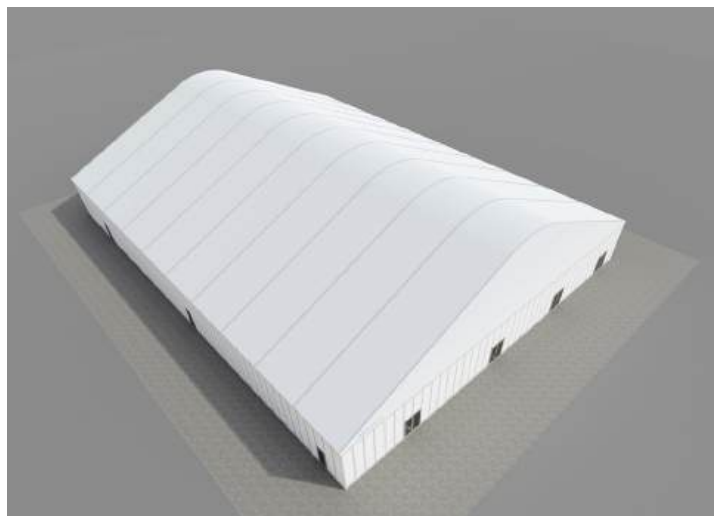


Tent Details:

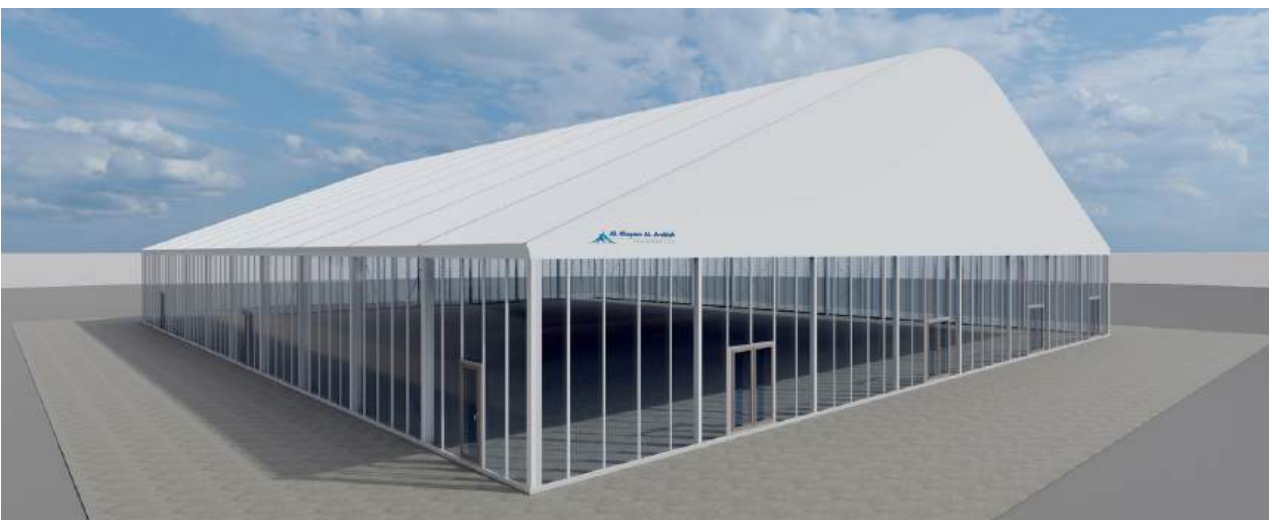
The Arcum Tent is composed of a highly reinforced aluminum frame and PVC covers. Arcum tent is based on the "A" frame clear span tent design and reasonably absorbs the Chinese traditional architectural design elements. We pre-press the aluminum roof beams so that they can become a curve shape.

Material and Fabrication :

- Aluminum Alloy Main Profile,
- PVC Roof Cover & PVC Clear Roof Cover
- Ground Anchors
- PVC Sidewalls & PVC Window sidewalls
- Lining & Curtains
- Double Wing Glass Door / Sliding Door
- Rain Gutters
- Decoration of ceilings and Inside curtain
- Glass Walls
- Weight Plates
- Floor System & Ramp for Glass Doors
- Flat ABS Walls & Shaped ABS Walls
- Fire Door
- Clear PVC Gable Wall
- Horizontal Glass Wall



Tent Size	Span Width	Eave Height	Ridge Height	Bay Distance	Main Profile
15m / 20m	3.92m / 5.55m / 6.33m	5m	—	—	256 x 121 x 5mm
25m / 30m	7.15m / 7.87m	—	—	—	(4 - Channel)



POLYGON TENT

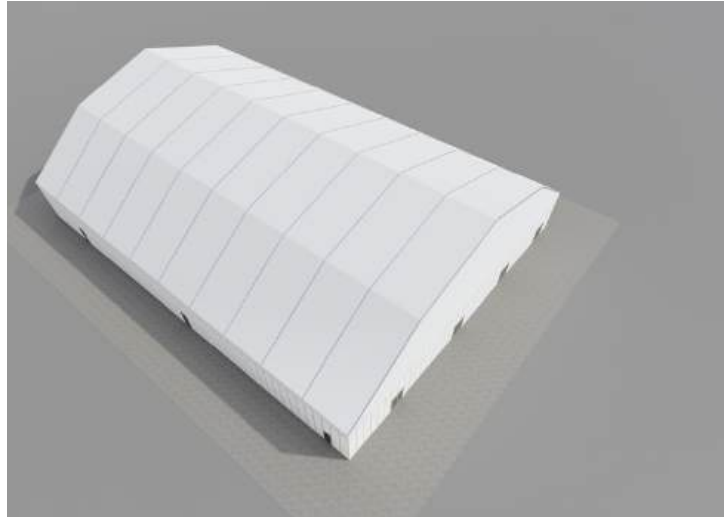


Tent Details:

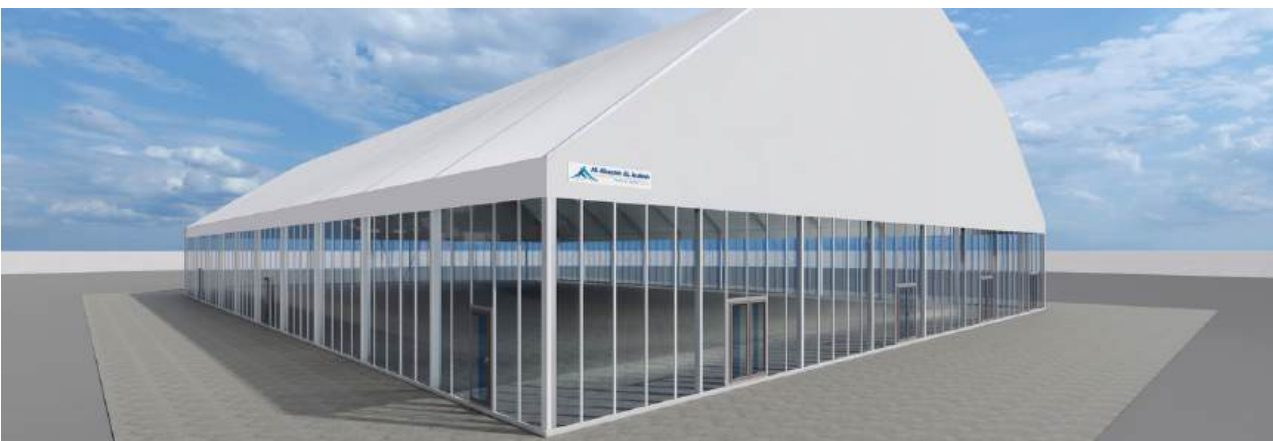
Polygon tent, also known as polygonal tent, is with a number of polygon shape of aluminum alloy beams and no poles inside the tent. This design makes the polygon structure stronger and durable, and with a clear span roof, the polygon tent creates a spacious indoor environment. The polygon tent is easily installed for permanent or temporary use and can be relocated or expanded based on your requirements.

Material and Fabrication :

- Fabric cover
- High quality double PVC
- Roof cover
- 850g/sqm white PVC Fabric
- Sidewall cover
- 650g/sqm white PVC Fabric
- Fabric color option
- White, yellow, transparent and customized
- Connector
- Strong hot-dip galvanized steel.
- Allowed temperature condition
- 30 degree Celsius +70 degree Celsius
- Wind load
- 100-120km/h or customized
- Snow load
- 75kg/sqm



Span Width	Eave Height	Ridge Height	Bay Distance	Main Profile
15m / 18m	—	8.75m / 9.15m	—	10-20m: 204×120×4mm
20m / 25m	4m	9.42m / 11.72m	5m	25-30m: 256×121×5mm
50m / 60m	—	16m / 18m	—	50-60m: 400×120×7mm



RELIEF TENT



Tent Details:

The Relief Tent is designed to provide safe, quick-deploy shelter solutions for refugees and displaced communities during emergencies. Manufactured using durable, waterproof, and flame-retardant materials, these tents offer strong protection from harsh weather conditions while ensuring privacy, comfort, and dignity for occupants.

Material and Fabrication :

- Galvanized Steel or Aluminum Frame
- Double-Layer Fabric (outer and inner layers connected with hooks)
- Flame-Retardant, Waterproof, UV-Resistant PVC Fabric (580–900 GSM)
- Integrated Curtain System
- Full-Length Windows on Each Sidewall
- Two Gable Doors with Ventilation Panels
- Ground Anchors & Floor System

Tent Features:

- 8-Sided Slope Pole Structure
- Quick Assembly & Portable Design
- Double Layer for Thermal Insulation
- High Airflow with Windows and Vents
- Weatherproof, Fire Retardant & Long-Lasting
- Provides Privacy and Comfort for Refugees



HEXAGON TENT



Tent Details:

The Hexagon Tent is a stylish and versatile structure designed for small-to-medium events that demand elegance and functionality. Its hexagonal design provides a free span of up to 8 meters with side heights between 2.5 and 3 meters, offering ample interior space and a visually appealing setup.

Built for strength and stability, it supports a 150 kg/frame hanging load and can withstand wind speeds up to 120 km/h, with customized designs available up to 140 km/h. Fast assembly technology ensures quick installation, while counterweights and metal stakes maintain structural integrity without damaging the site.

Material and Fabrication :

- Aluminum or Steel Frame
- High-Quality PVC Roof & Side Panels
- Counterweights & Metal Stakes for Anchoring
- Modular Frame Design for Quick Assembly
- Optional Custom Finishes for Style & Branding

Tent Features:

- Elegant Hexagon Design for Visual Appeal
- Free Span Structure for Maximum Usable Space
- High Wind Resistance (Standard 120 km/h, Custom 140 km/h)
- 150 kg/frame Hanging Load Capacity
- Quick Assembly & Easy Dismantling
- Suitable for Luxury Events, Exhibitions, and Corporate Functions



DOME TENT



Tent Details:

The Relief Tent is designed to provide safe, quick-deploy shelter solutions for refugees and displaced communities during emergencies. Manufactured using durable, waterproof, and flame-retardant materials, these tents offer strong protection from harsh weather conditions while ensuring privacy, comfort, and dignity for occupants.

Material and Fabrication :

- Galvanized Steel or Aluminum Frame
- Double-Layer Fabric (outer and inner layers connected with hooks)
- Flame-Retardant, Waterproof, UV-Resistant PVC Fabric (580–900 GSM)
- Integrated Curtain System
- Full-Length Windows on Each Sidewall
- Two Gable Doors with Ventilation Panels
- Ground Anchors & Floor System

Tent Features:

- 8-Sided Slope Pole Structure
- Quick Assembly & Portable Design
- Double Layer for Thermal Insulation
- High Airflow with Windows and Vents
- Weatherproof, Fire Retardant & Long-Lasting
- Provides Privacy and Comfort for Refugees



MILITARY TENT



Tent Details :

The Military Tent is designed for quick deployment, durability, and operational efficiency in the toughest environments. It provides a clear-span structure for 100% interior usability and is easy to assemble, dismantle, and transport. Made from high-quality flame-retardant PVC, it offers exceptional resistance to wind, UV rays, and rain. The integrated mesh windows ensure airflow and comfort even in extreme conditions.

Material and Fabrication :

- Aluminum Alloy Main Frame
- PVC Roof Cover & PVC Sidewalls
- Ground Anchors
- Roll-up Doors and Windows
- PVC Mesh Windows for Ventilation
- Lining Curtains
- Floor System
- Optional HVAC & Insulation Systems

Tent Features:

- Modular & Customizable Design
- 100% Usable Interior Space
- Wind and Weather Resistant
- Easy Assembly and Compact Transport
- Fire Retardant, Waterproof, and UV Protected



PADDOCK SHADES



Details:

Akaatent paddock shades are ideal for those within the equine business. We've had customers utilize the flexibility of our buildings for his or her placental mammal wants and deemed them worthy because of the excellent structure for horses. With no interior columns, you'll have the house you would like for riding, boarding, and accommodation. If you're a part of the equine business and are having problems with building layout, construction, and convenience, then akaatent is here to assist.



SOLAR PARKING SHADES



Details:

AL-Khayam Al Arabiah Tents & Sheds Trd. LLC manufactures and supplies Solar Panel car parking shades in UAE Dubai. We are doing Solar Car park structures, Custom Steel Structures, or building Roofs for fixing Solar PV panels in the UAE Middle east, including Design approvals, fabrication, and installation. AL-Khayam Al Arabia Tents & Sheds Trd. LLC offers a wide variety of Solar Car parking shades that are readily designed in standard dimensions for immediate installation.



AWNING



Details:

Awning Shades are the most popular and smart shade solution for homes, shops, and outdoor restaurants in the UAE. For UAE's extremely harsh weather Awning shades let owners control the weather on their own terms. By the test measurements, it's proved that it can be as much as 20° Cooler under an Awning Shade because Awning Prevents the sun from shining through windows and sliding glass doors, they can keep temperatures inside cooler as well, which saves on air-conditioning costs.



Thank You

Because, we're here to help

AL KHAYAM AL ARABIAH TENTS



Address

Office no. 201 & 203, 2nd floor, Liberty Building Sharjah, UAE



Telephone

+971 6 5656385



Website

www.akaatent.com